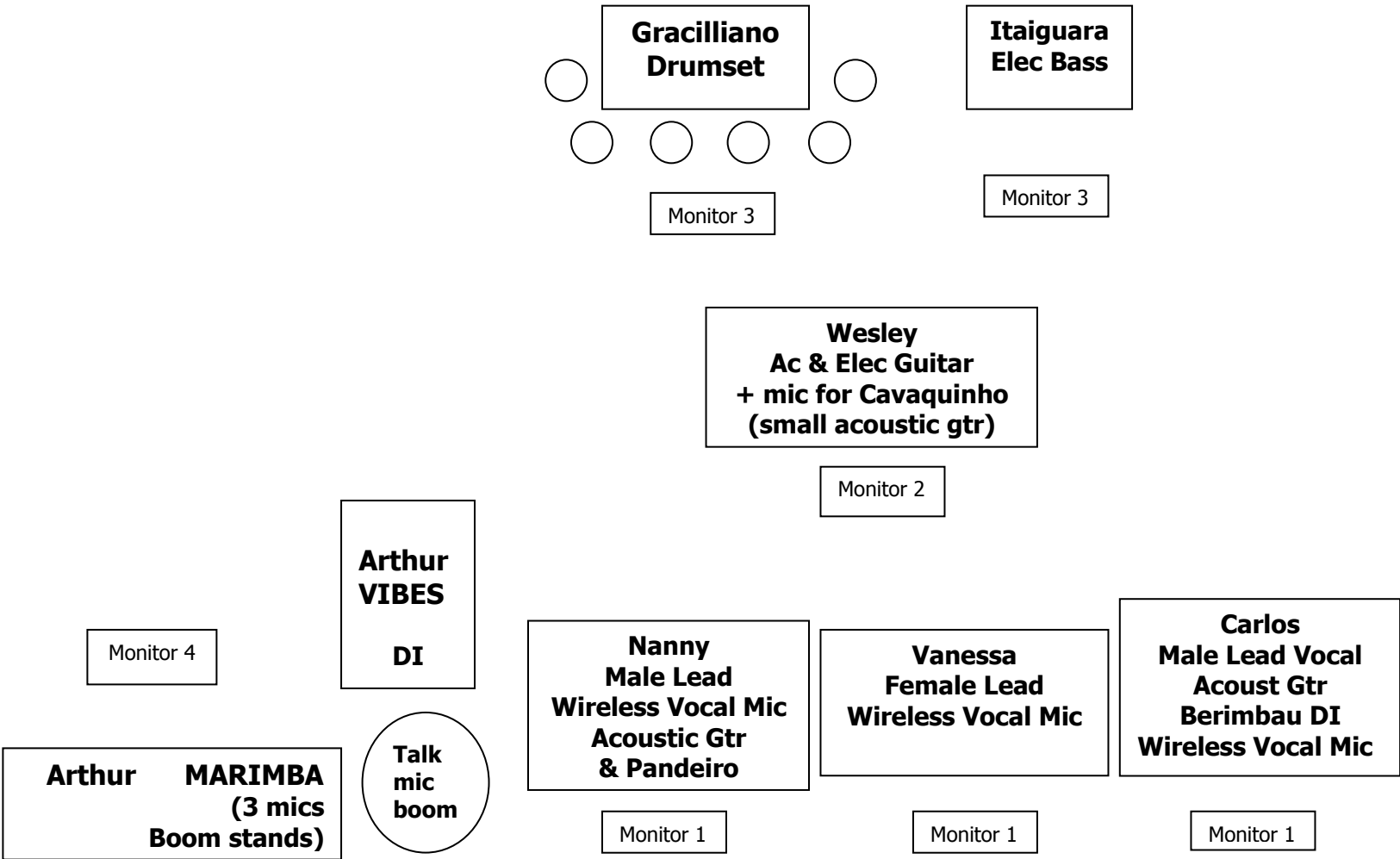


ARTHUR LIPNER & BRASILIAN VIBES – Levitt Pavilion 8-2-15
Contact: Arthur Lipner c: (203) 918-2916
7-pce Stage Setup



A U D I E N C E

Arthur Lipner & Brazilian Vibes Inputs/Technical Requirements

BACKLINE REQUESTED

(4) guitar amps as indicated – unless you don't typically use amps

Electric Bass Amp 300 Watts/4x10 if possible

Full drumset and hardware (Yamaha first choice followed by Sonor, DW then Pearl)

MICROPHONES

- 1) 8 mics + 1 mic inputs + Drumset : (3) Marimba Lo-Mid-Hi – all boom stands
(1) Talk mic between Vibes and Marimba
(1) Nanny Male lead vocal wireless
(1) Vanessa Female lead vocal wireless
(1) Carlos Male lead vocal wireless
(1) Wesley guitarist for cavaquinho (small guitar)
>>(1) Mic input only from Arthur's headset
Drumset – standard mics

DI's

5 DI's: Vibes – boost low mids, Digital delay 17msec @ 25% processed/75% dry
Acoustic Guitar - Nanny
Acoustic Guitar – Wesley
Berimbau – Carlos
Electric Bass

AMPS – 2 amps: Wesley Electric Guitar
Electric Bass

MONITOR MIXES

Monitor 1 Vocal mix emphasis
Monitor 2 Full band - guitar emphasis
Monitor 3 Balanced mix
Monitor 4 Vibes/Marimba emphasis